

THIS MATERIAL IS THE EXCLUSIVE PROPERTY OF CHMP INC. AND CANNOT BE REPRODUCED, COPIED, OR USED IN ANY MANNER WITHOUT THE PRIOR WRITTEN CONSENT OF CHMP INC.  
 © 2016

CLYDE TOWNSHIP MUNICIPAL CENTER  
 SITE & BUILDING IMPROVEMENTS  
 3350 VINCENT ROAD CLYDE TOWNSHIP, MICHIGAN

**PLAN REFERENCE NOTES:**

- 1 5/8" SUSPENDED GYPSUM BOARD SOFFIT/ BULKHEAD - REFER TO 09 25 55 "GYPSUM BOARD ASSEMBLIES" OF THE SPECIFICATIONS - REFER TO ROOM FINISH SCHEDULE FOR HEIGHTS.
- 2 EXISTING DRYWALL CEILING - PATCH AND PAINT. (MECHANICAL AND ELECTRICAL ROOMS)
- 3 SHADED CEILING AREA REPRESENTS FIRE RATED ASSEMBLY AT UNDERSIDE OF ROOF TRUSSES AS FOLLOWS: (1) LAYER 5/8" TYPE "X" GYPSUM BOARD OVER 1/2" RESILIENT SOUND CHANNEL (RC-1) @ 12" O.C. ATTACH TO UNDERSIDE OF TRUSS ABOVE - ONE HOUR FIRE RATED (U.L.PS22)

**CEILING LEGEND**

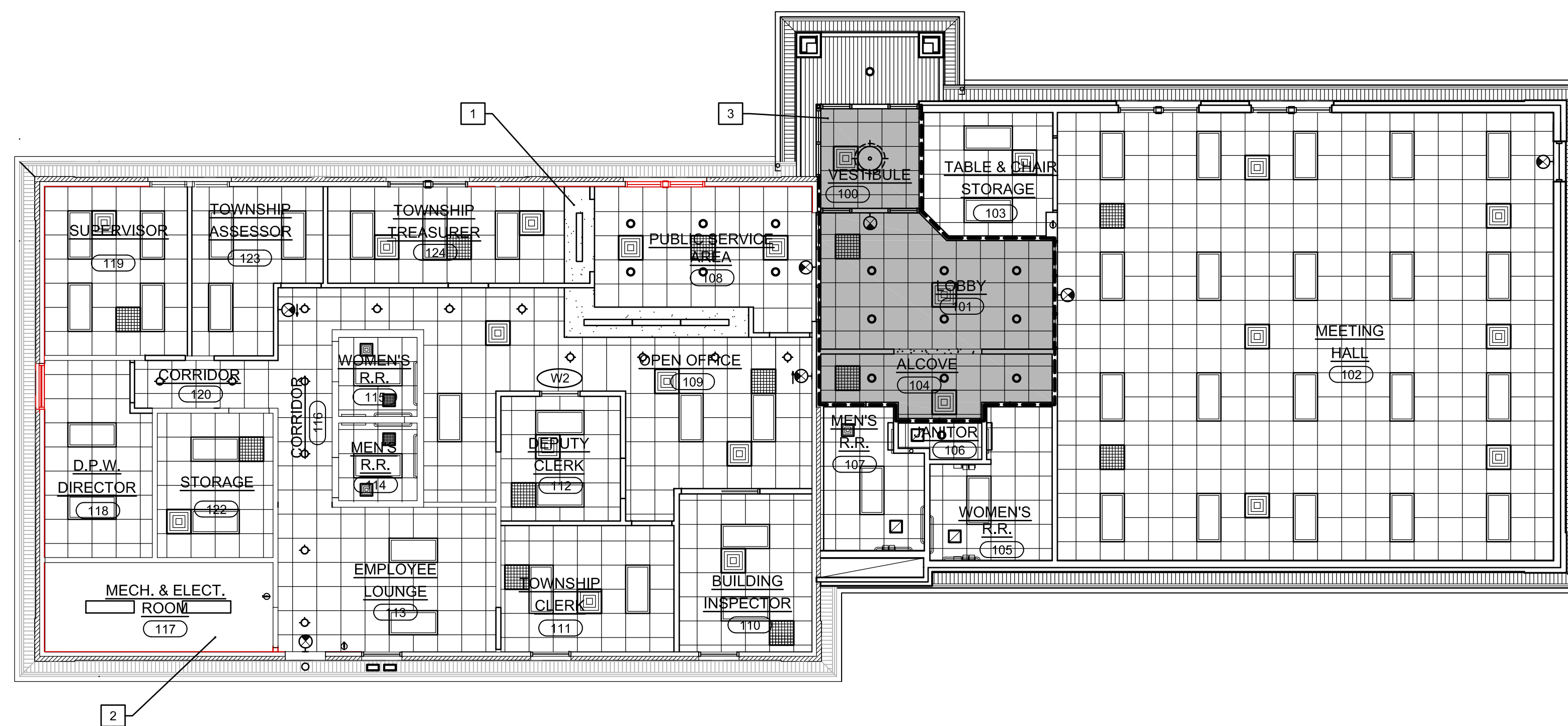
- 2' x 4' LAY-IN LIGHT FIXTURE
- 1' x 4' SURFACE MOUNTED LIGHT FIXTURE
- RECESS MOUNTED LIGHT FIXTURE
- PENDANT MOUNTED LIGHTING FIXTURE
- RECESSED DOWN FLUORESCENT LIGHT FIXTURE
- WALL MOUNTED EXIT LIGHT FIXTURE
- 2' x 2' ACOUSTICAL CEILING GRID WITH 6" SONOBATT INSULATION ABOVE ALL EXCEPT MEETING HALL 102 AND TABLE & CHAIR STORAGE 103
- PREFINISHED VENTED METAL SOFFIT
- GYPSUM CEILING WITH 6" SONOBATT INSULATION ABOVE IN ALL EXCEPT ROOMS 106 AND 118
- SUPPLY DIFFUSER
- RETURN GRILLE
- 12" x 12" EXHAUST AIR LOUVER

**REFLECTED CEILING PLAN  
 GENERAL NOTES**

- A. REFER TO ROOM FINISH SCHEDULE SHEET A-7 FOR ALL CEILING HEIGHTS AND FINISHES.
- B. ANY ACOUSTICAL CEILINGS NOT DIMENSIONED ARE TO BE EVENLY SPACED FROM PERIMETER WALLS IN ROOM.
- C. PAINT ALL EXPOSED MECHANICAL/ELECTRICAL EQUIPMENT, I.E. DUCTWORK, CONDUIT, ETC.



**REFLECTED  
 CEILING PLAN (REVISED)**  
 SCALE 1/8" = 1'-0"



PROJECT NO.	16000800
DATE	FEB. 15, 2016
AS BUILT DATE	
DRAWN BY	AS, GNM
CHECKED BY	GNM
SCALE	AS NOTED
ISSUED FOR:	DATE
OWNER REVIEW	3-20-17
PLAN REVIEW	3-27-17
BIDDING	4-11-17
REVISED	12-12-17

SHEET NO.  
**A-2**  
 OF